



2012.11

Tanja Lincke Architekten
 House on the Spree
 Treptow-Köpenick, Berlin, Germany 2013-2017

タナ・リンケ・アーキテクテン
 シュプレー川沿いの住宅
 ドイツ、ベルリン、トレプトウケーペニック 2013-2017

New Construction of a Residential Building on the Former Shipyard Grounds of German Democratic Republic's Water Police
 Blending naturally into the industrial surroundings of concrete footbridges, bank reinforcement, and boathouses from the 1970s, the house sits elevated above the water level. It interacts with the neighboring Rain Garden and provides a deliberately staged, generous view of the Spree Canal.

The physical appearance of the building, strongly characterized by the glass facade's anodized elements, also refers to the 1970s. The window division has a circulating skylight band that binds the ceiling panels together, which lends a new proportion to the interior and respects the human scale. A correspondingly raw wooden framework gives shape to the

columns. The upper parapet cornice is also made of lightweight concrete, to avoid the arrangement of expansion joints. A lightweight concrete core, constructed with industrial panel formwork with no exposed concrete requirements, runs through the entire building. Narrow and windowless, it contrasts the living level, which opens up all around toward the outside. From here the shore is blended out, so that water visually flows underneath.

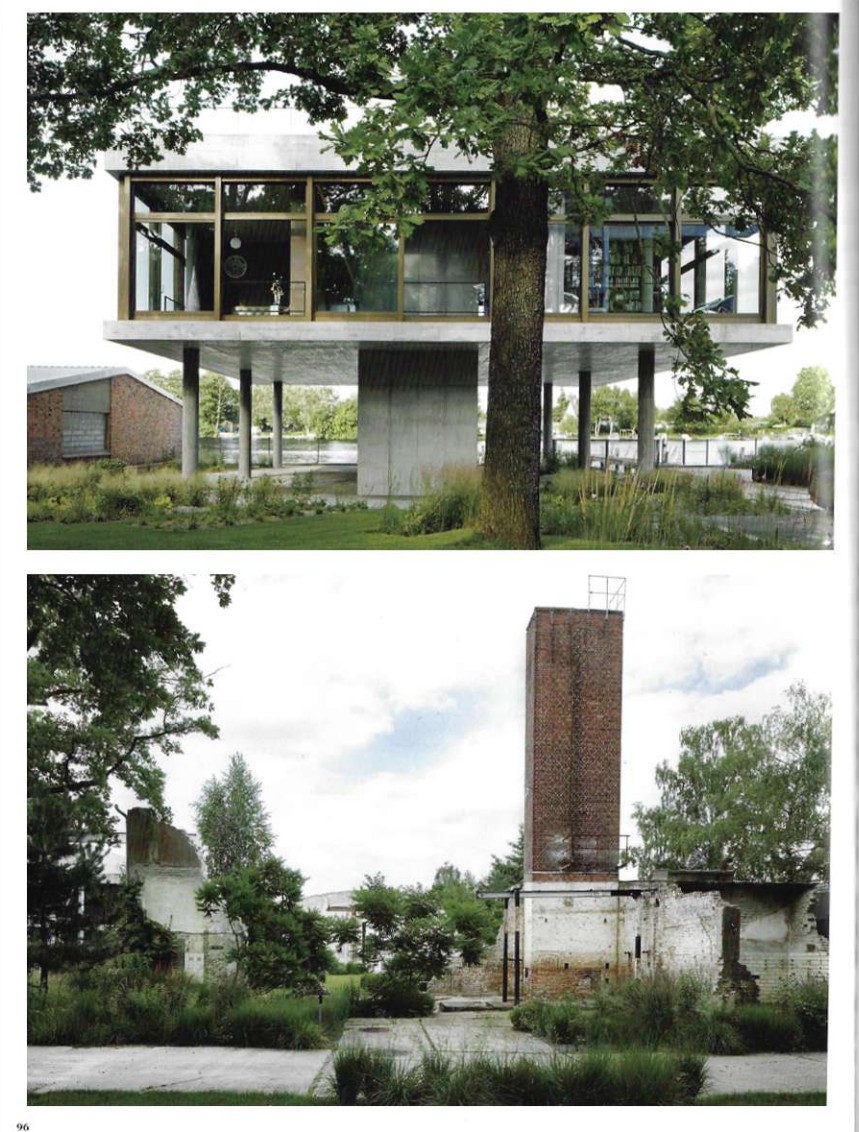
Partition walls between the staircase, kitchen, and bathroom – all handled in the core – are made of glass blocks, so that the longitudinal flow of the core is disturbed as little as possible. Glass blocks can also be found on some existing buildings, such as the adjacent boathouse. The railing of the precast concrete staircase refers to the fall

protection that was added during the construction phase of the shell. Partly consisting of tree bark, the rough wood comes from the trees that had to be felled for the construction of the building. This wood was also used to design other furniture for the house, such as a large dining table. The sofa and curtains have been designed with artist Anselm Reyle. A special color gradient printed on the translucent fabric creates varying transmissions of light.

Reversible furniture made of zeltrano wood veneer zones and divides the living area. A long, dividing cupboard unit creates 2 bedrooms and regulates the interior climate, due to the plastered clay panels on the rear side.



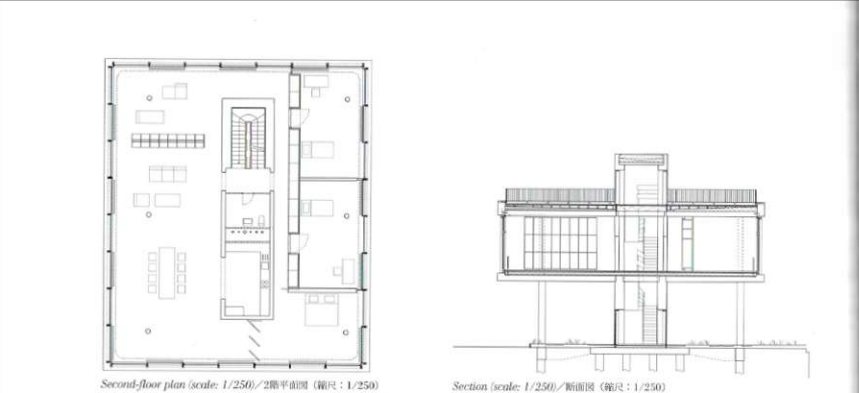
建築家紹介
 TANJA LINCKE AND BERANSMI
 2012.11
 626
 Feature
 Berlin
 Tanja Lincke Architekten
 House on the Spree
 Treptow-Köpenick, Berlin, Germany



96



97



Credits and Data
 Project title: House on the Spree
 Client: Tanja Lincke and Anselm Reyle
 Location: Treptow-Köpenick, Berlin, Germany
 Design: 2013
 Completion: 2017
 Architects: Tanja Lincke Architekten
 Design team: Tanja Lincke, Helge Engelbert, Anja Rigamonti
 Project team: Puhler Ingenieurbüro GmbH (structural engineering), Müller IBM (building physics)
 Site area: 8,860 m²
 Gross floor area: 446 m²

旧ドイツ製主井筒(東ドイツ)の水上警備
 商船工場跡地で新たな住宅の建設
 コアが長手方向のつながりを通るのを選び
 コアにまともな階段、キッチン、
 浴室の壁にはガラス・ブロックが使用され
 た。ガラス・ブロックは、開閉する機能など、
 意匠の機能も兼ねるとできる。
 プラスチック・コンクリートの両面手摺は、
 電線の施工経路に合わせた落下防止の柵
 を参照している。部分的に異なる材料に
 仕上げの木材は、建物を建てるために使
 された根柢から採られている。木材はさ
 なざコンクリート・パネルなど、住宅の家具
 にも使われた。ソファとカーテンは、アー
 ティストのアナソム・ライヒととも
 りデザインされた。様々な色の織物をく
 み合わせた。透き通るような布地に特殊なグ
 ラデーションが施された。
 ゼパノ(ゼブラ・ウッド)の合板でつく
 るため、上部バルベットのコーニスも
 裏面コンクリートで覆われている。打設し
 コンクリートの表面を加工して、その
 型枠で打設された粗面コンクリートの
 コアは、四角がすべて外に開かれた居住用
 とは対照的である。居住層からは川岸が視
 界から見え、旧建物のすぐ下を流れている
 (中田隆幸)



99